

19" RACK MOUNT LCD MONITOR



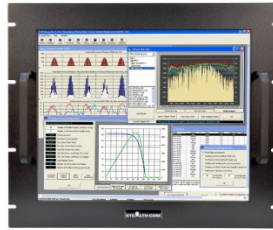
\$1,540.00 USD

Model: SV-1905-RM

- 19" Industrial Grade Rack Mount LCD Display
- Optional Capacitive or Resistive touch screens
 - Wide DC Input (9-36V DC)
- Wide operating temperature (-10C - +60C)
- 350 Nits of Brightness, Adjustable Controls
- DVI-I, HDMI & DisplayPort video connectors
 - 3 Year Warranty



GALLERY IMAGES



PRODUCT DESCRIPTION

Stealth builds high quality Rackmount LCD Monitors suited for industrial and commercial applications. The model SV-1905-RM is our 19" Rack Mount LCD is easily installed into industry standard 19" EIA rack cabinets and enclosures in minutes.

All of our Ruggedized Displays are available with various Touch Screen options including Resistive or Capacitive. Our displays have wide viewing angles, 350 Nits of Brightness with adjustable controls and equipped with DVI-I, HDMI, DisplayPort video connectors. The SV-1905-RM comes standard with a 3 Year warranty with extended warranty options available.

Prior to shipping, each and every display is put through Stealth's rigorous QA burn-in procedure that is documented and controlled through our ISO 9001 quality system.

Stealth offers a wide range of LCD product offerings including Panel mount, Rack mount and Open Frame designs as standard off-the-shelf products in 15" up to 24" diagonal sizes. Our Rugged LCD products are constructed from solid steel and will meet the demands of your application without breaking your budget.

ADDITIONAL INFORMATION

Bezel Type	Rack Mount
Screen Size	19.0" (Diagonal)
Aspect Ratio	5:4
Native Resolution	1280 x 1024 (Auto sync from 640 x 480 to 1280 x 1024)
Pixel Pitch	0.294mm x 0.294mm
Response Time	10ms (Typical, On/Off)
Type	TFT Active Matrix Liquid Crystal
Video Input Connectors	DVI-I c/w DVI to VGA Adapter HDMI Displayport
Viewing Angle	170° / 160° (H / V) - (Viewing angle of LCD panel without touch)
Contrast Ratio	1000:1 (typical)
Luminance (Brightness)	350 cd/m2 typical at center (350 Nits)
Viewable Image Size	Horizontal: 14.81" / 376.32 mm, Vertical: 11.85" / 301.06 mm
Input	90 ~ 264V AC, 47~63Hz rear-mounted (removable) Power Supply DC Input (std.): 9V - 36V DC DC Input (opt.): 43V - 160V DC DC Input (opt.): 180V - 300V DC
Control Buttons (Rear mounted)	Power, Left, Right, Menu
Controls On-Screen Display	Brightness, Contrast, Input Source, Color, Image Adjust, OSD Lockout
Environmental Rating	N/A - not rated
Environmental	Operating Temperature: -10C - +60C (14F - 140F) Storage Temperature: -30C - +85C (-22F - +185F) Operating: Relative Humidity 20% ~ 80% Storage Relative Humidity: 20% ~ 80%
Cooling	Natural Convection (no fan)

Panel Finish	Black Baked Enamel (Standard)
Unit Weight	Unit Weight: 15.5 Lbs (7 Kg)* Shipping Weight: 21.90 Lbs (9.94 Kg)* * Weight may vary depending on configuration
Dimensions	Add 1.33" (33.78mm) to depth with rear mounted AC Adapter With Touch: 19.0" (w) x 15.72" (h) x 2.74" (d) [482.6mm x 399.29mm x 69.52mm] Without Touch: 19.0" (w) x 15.72" (h) x 2.42" (d) [482.6mm x 399.29mm x 61.52mm] SV-1905-RM – No protective glass, LCD directly exposed SV-1905-RM-160V – (43V – 160V DC) SV-1905-RM-300V – (180V – 300V DC) SV-1905-RM-CT-DB9 – Capacitive Touch with Serial/DB9 Interface SV-1905-RM-CT-USB – Capacitive Touch with USB Interface SV-1905-RM-CT-USB-160V – Capacitive Touch & 43V – 160V DC SV-1905-RM-CT-USB-300V – Capacitive Touch & 180V – 300V DC SV-1905-RM-RT – Resistive Touch with Serial/DB9 and USB Interface SV-1905-RM-RT-160V – Resistive Touch & 43V – 160V DC SV-1905-RM-RT-300V – Resistive Touch & 180V – 300V DC
Available Models	
Warranty	3 Year Parts and Labor
Disclaimer	Note: Specifications are subject to change without notice.