

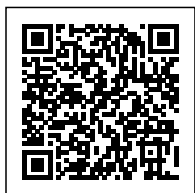
19" RACK MOUNT LCD MONITOR (QUICKSHIP)



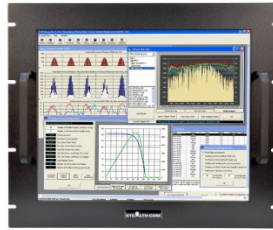
\$1,930.00 USD

Model: SV-1905-RM

- 19" Industrial Grade Rack Mount LCD Display
 - Resistive touch screen Standard
 - Optional NEMA 4/IP65 configurations
 - Wide DC Input (9-36V DC)
- Wide operating temperature (-10C - +60C)
- 350 Nits of Brightness, Adjustable Controls
 - VGA, DVI-D, and HDMI video connectors
 - 3 Year Warranty



GALLERY IMAGES



PRODUCT DESCRIPTION

Stealth builds high quality LCD monitors suited for industrial and commercial applications. The model SV-1905-RM is our 19" Rack Mount LCD is easily installed into industry standard 19" EIA rack cabinets and enclosures in minutes. Our Rackmount LCD products are built with an optional environmentally sealed NEMA 4 / IP65 front panel that is resistant to dust/dirt penetration or even liquid splashes.

All of our Ruggedized Displays are available with various Touch Screen options including Resistive or Capacitive. Our displays have wide viewing angles, 350 Nits of Brightness with adjustable controls and comes standard with a 3 Year warranty with extended warranty options available.

Prior to shipping, each and every display is put through Stealth's rigorous QA burn-in procedure that is documented and controlled through our ISO 9001 quality system.

Sparton Rugged Electronics under the brands of Aydin & Stealth offer a wide range of LCD product offerings including Panel mount, Rack mount and Open Frame designs as standard off-the-shelf products in 15" up to 24" diagonal sizes. Our Rugged LCD products are constructed from solid steel and will meet the demands of your application without breaking your budget.

ADDITIONAL INFORMATION

Bezel Type	Rack Mount
Screen Size	19.0" (Diagonal)
Aspect Ratio	5:4
Native Resolution	1280 x 1024 (Auto sync from 640 x 480 to 1280 x 1024)
Pixel Pitch	0.294mm x 0.294mm
Response Time	10ms (Typical, On/Off)
Type	TFT Active Matrix Liquid Crystal
Video Input Connectors	VGA / HD-15 DVI Compliant Digital HDCP (DVI-D) HDMI
Viewing Angle	170° / 160° (H / V) - (Viewing angle of LCD panel without touch)
Contrast Ratio	1000:1 (typical)
Luminance (Brightness)	350 cd/m2 typical at center (350 Nits)
Viewable Image Size	Horizontal: 14.81" / 376.32 mm, Vertical: 11.85" / 301.06 mm
Input	DC Input: 9V - 36V DC AC Adapter is Removable AC Input: 100-240V, 50-60Hz, 1.5A
Control Buttons (Rear mounted)	Power, Left, Right, Menu
Controls On-Screen Display	Brightness, Contrast, Input Source, Color, Image Adjust, OSD Lockout
Environmental Rating	When properly installed, NEMA 4 / IP64 protection against windblown dust, rain, spashing water, and hose-directed water With Touch: NEMA 4 / IP65 Without Touch: No environmental approval
Environmental	Operating Temperature: -10C - +60C (14F - 140F) Storage Temperature: -30C - +85C (-22F - +185F) Operating: Relative Humidity 20% ~ 80% Storage Relative Humidity: 20% ~ 80%

Panel Finish	Black Baked Enamel (Standard)
Unit Weight	Unit Weight: 15.5 Lbs (7 Kg)* Shipping Weight: 21.90 Lbs (9.94 Kg)* * Weight may vary depending on configuration
Dimensions	Add: 1.34" (d) [34.04mm] with AC Adapter With Touch: 19.0" (w) x 15.72" (h) x 2.46" (d) [482.6mm x 399.29mm x 62.39mm] Without Touch: 19.0" (w) x 15.72" (h) x 2.22" (d) [482.6mm x 399.29mm x 56.39mm]
Available Models	SV-1905-RM-RT – Resistive Touch with Serial/DB9 and USB Interface
Warranty	3 Year Parts and Labor
Disclaimer	Note: Specifications are subject to change without notice.